



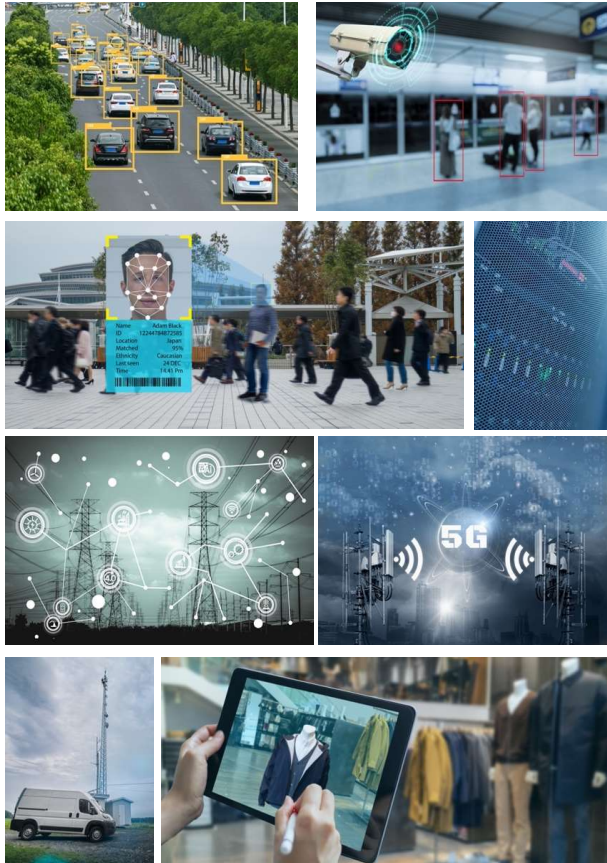
NBYCOMP
NearbyComputing

Nearby Computing

Enabling the Edge

March, 2022

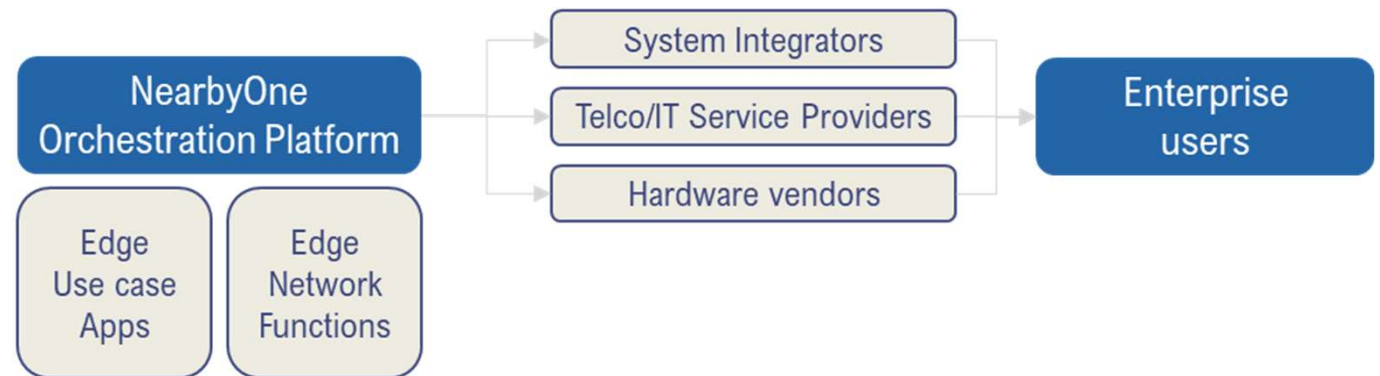
At the heart of EDGE COMPUTING



Nearby Computing SL, headquartered in Barcelona (Spain), delivers Edge Computing management and automation solutions through **its own automation and orchestration platform *NearbyONE***.

NearbyONE has proved to be **the most complete, versatile and performant tool** in the market.

We make a new generation of powerful Edge use cases **available and affordable to a vast majority of companies**.



Industry-Leader Edge Automation Platform



Only solution in the market enabling **full Multi-Edge management** through a Single Pane of Glass

Unrivalled features for a 360° Edge Orchestration

First product to be compliant with Intel's **Converged Edge Architecture.**

Listed amongst the **9 pioneers in Network Edge Orchestration** by Edge market analyst STL Partners.

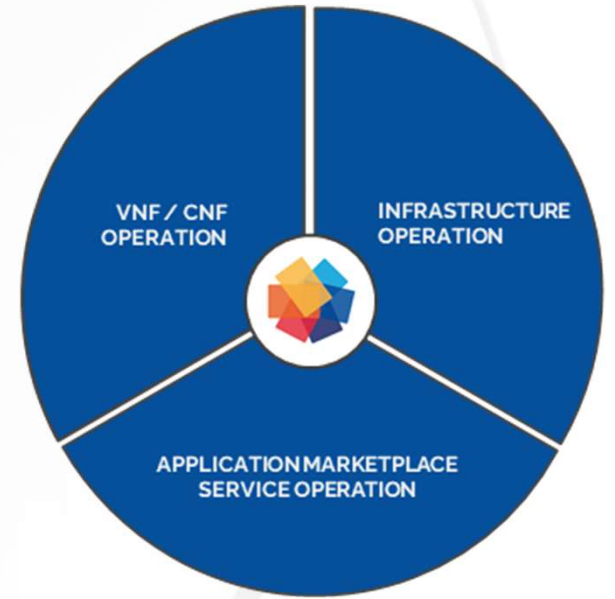


Enabling Edge use cases at scale



Improving enterprise operations.

NearbyONE allows massive deployments of Edge use cases through IoT, AI and video-centric applications.



Solving the Edge challenges



Linking Edge Computing and 5G.

NearbyONE goes beyond the state of the art, managing the different flavours of Edge Computing on a **Single Pane of Glass**.

Edge Computing Market forecasts



Edge Computing will be used massively by enterprises in the context of 5G and Industry 4.0

29B (2022) connected devices sending data

Telecommunications Industry Association report, 2019

A technical need

By 2025, 75% of data will be processed at the Edge

TechUK report, Mar 2021

77% of decision-makers expect an increase of Edge Computing expenses in 2022

EMC Report on Edge Computing, Fall 2021

A clear decision

Edge will account for 30% of the enterprises IT budget

"Strategies for Success at the Edge, 2019," Analysis Mason.

Projected TAM \$10B (2020) \$543B (2030) CAGR 49%

STL Partners, Edge market report, Dec 2021.

A huge new market

Projected TAM \$6,3B (2021) \$61,1B (2028) CAGR 38%

Grand View Research May 2021.

**Superior
capabilities**

**Wider
market reach**

**Unique
Selling
Points**

**Ecosystem
friendly**

**Adaptive
business
model**

Our journey



Incorporation



2018

6 Founders +



Pre-seed Round



2019



Seed Round



2020



Definitional customers



2021

Series A Round



2022

Meet the Team



Josep Martí
CEO
MS Telecom Engineering



David Carrera
CTO
MS, PhD Computer Science



Òscar Trullols
CTA
MS, PhD Computer Science



Saj Safir
CCO
MS, Computer Science



Angelos Antonopoulos
R&I Director
MS, PhD Telecom Engineering



Patricia Fernández
Finance Controller
MA Finance, BBA

Steering Committee



Àlvaro Villalba
Orchestration Engine Lead
MS, PhD Computer Science

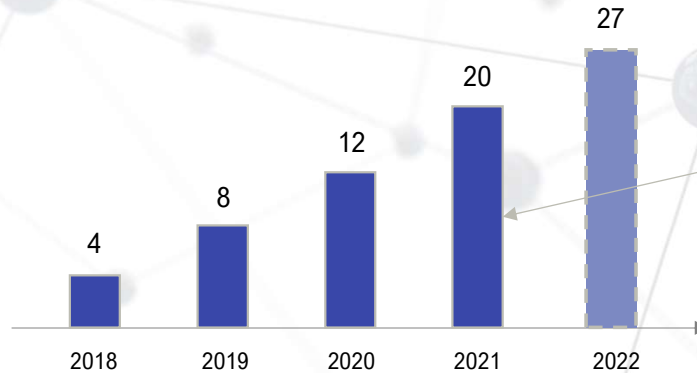


Tom Fenech
UI, API Lead
BSc, PhD Physics



Sergi Alonso
Integration Lead
MS, Computer Science

Founding team



Headcount evolution

A highly-skilled technical group, with up to 16 IT engineers, including 6 PhD, 5 MSc and 5 BSc.

Thank you.

We are happy to schedule a meeting for a deeper discussion of Nearby Computing's technology and market potential.



NEARBY
COMPUTING



Barcelona - nearbycomputing.com - [@nbycomp](https://twitter.com/nbycomp) - nbc@nearbycomputing.com